

Davis Wireless Vantage Pro2 with 24-Hr Fan Aspirated Radiation Shield and WeatherLink Console 6253

Product Images





NEW!
AeroCone™

DAVIS

IMPROVED PERFORMANCE

The AeroCone sensor assembly is shown with blue lines representing wind flow around the cup, indicating improved performance. The Davis logo is prominently displayed on the base of the sensor.



Short Description

The Davis 6253UK is an expandable, professional weather station that records barometric pressure, temperature, humidity, rainfall, and wind. The outside temperature and humidity sensors are housed in a 24-hour Fan-Aspirated Solar-radiation Shield, for maximum accuracy.

View your your live weather data on the interactive touchscreen display of the included WeatherLink Console, stream over Wi-Fi and view on the WeatherLink smartphone app, or online at WeatherLink.com.

Description

Because we are an authorised Davis Service Centre, we provide a FREE THREE YEAR WARRANTY on all Davis products purchased from us.

These rugged Davis Vantage Pro2 weather stations are designed to offer years of service. They are the only weather station in their class offering sensors manufactured to a traceable accuracy.

The wireless transmission far out-performs and updates more frequently than any similar wireless weather stations. Using frequency-hopping spread spectrum radio technology at 868mhz; it transmits weather data

every 2.5 seconds up to 300m.

The Integrated Sensor Suite is solar-powered, with its electronic components housed in a weather-resistant shelter. All the outdoor electronic components are specially designed to resist the effects of exposure to the atmosphere.

This fan aspirated radiation shield (FARS) system includes a 24 hour solar powered fan for even greater accuracy as part of the radiation shield. This feature is ideal for hot & humid climates as the FARS combines active and passive aspiration to minimise the effects of radiation.

In addition to the optional accessories above, there are [many more to choose from](#), either now, or in the future as your needs change.

Access Real-Time Weather Data Anywhere & Anytime

The included [WeatherLink Console](#) is the easiest & fastest way to see your weather data online.

WeatherLink Console is a fully functional and powerful touch-screen data display, storage, and analysis tool on its own – no Wi-Fi required. Or you can connect to Wi-Fi to join the WeatherLink community and upload and share data safely and securely. View your live data on WeatherLink Cloud and WeatherLink mobile apps for iOS and Android.

One WeatherLink Console can collect data from 80+ sensors from up to 8 transmitters in any combination.

Interactive Touchscreen Display

Use the WeatherLink Console's vibrant HD touchscreen to easily navigate, view, and analyse your weather data on one intuitive device.

- Track detailed hourly and daily forecasts for the next 7 days when connected to the WeatherLink Cloud.
- Protect against data loss during power outages with integrated lithium-ion battery.
- Add a second console to your system to view data in multiple rooms.

View up to 21 Parameters

Customise the dashboard to show up to 21 parameters that matter to you, including inside and outside temperature and humidity, barometric pressure, wind speed and direction, rainfall, dewpoint, moon phase, highs and lows, and more.

Alerts When Conditions Change

Get notified about changes in the environmental changes you care about most (such as high wind, freezing temperatures, high rain rate, heat index, and more).

Stream live data directly to the Internet

Connect your WeatherLink Console to WeatherLink Cloud, and use [Weatherlink.com](#) or the WeatherLink iOS or Android app to watch wind gusts and direct changes as they occur. (You don't even need a computer or Vantage Pro2/Vantage Vue console!).

Part of Your Smart Home

Connect to Amazon Alexa or Google Assistant to ask for the latest conditions. Also connects to smart irrigation systems.

View And Analyse Historical Insights

Use your full database of historical records stored right on the console to create custom graphs and analyse your data. WeatherLink Console stores years of historical data with settable local archive update rates. This console offers years of data and analysis even without internet connection. (Dependent upon update rate.)

Securely share your data

Share data with friends, family, or co-workers via the WeatherLink website and mobile apps. Upload to a growing list of third-party sites including Weather Underground or CWOP.

Long-range wireless data

Depend on Davis's industry-leading, proprietary, frequency-hopping, spread spectrum radio to transmit data up to 1,000 ft. (300 m).

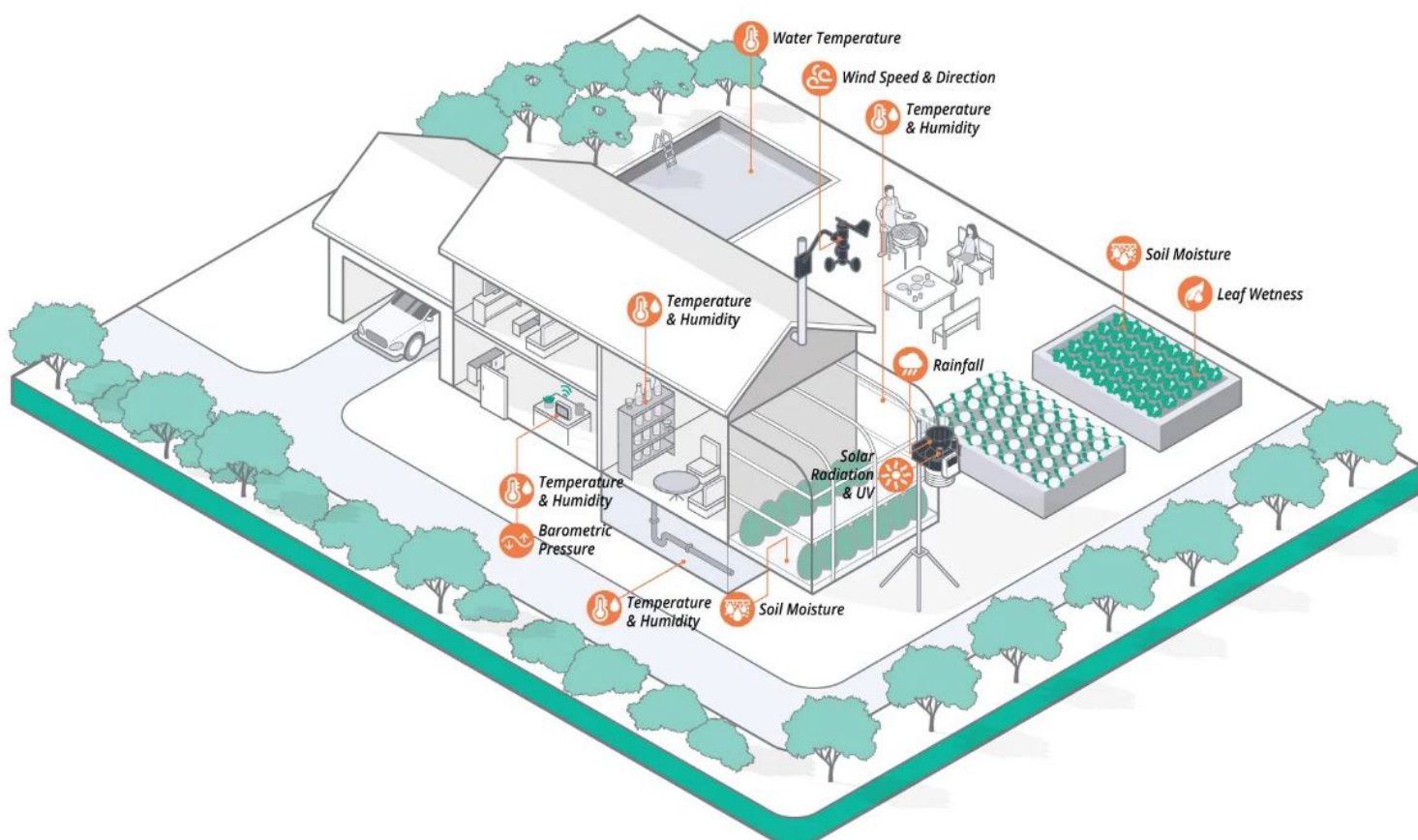
Data in Your Pocket

WeatherLink Mobile App brings your data and the Davis WeatherLink Network to your phone. Join the worldwide network of businesses, schools and hobbyists sharing their weather data with the world. WeatherLink lets you see your personal Davis Instruments weather station data and local forecasts, as well as explore other stations from around the world. Enjoy 7-day and hourly forecast, rain, barometer, solar radiation and many more.



Monitor Your Home Environment

Configure a custom network of over 80 sensors on 8 transmitters, so you can see data from sensors in the garden/greenhouse, children's bedrooms, the loft, basement, pool/fish pond, garage, wine cellar – all with one WeatherLink Console.



Add any combination of up to eight of the following:

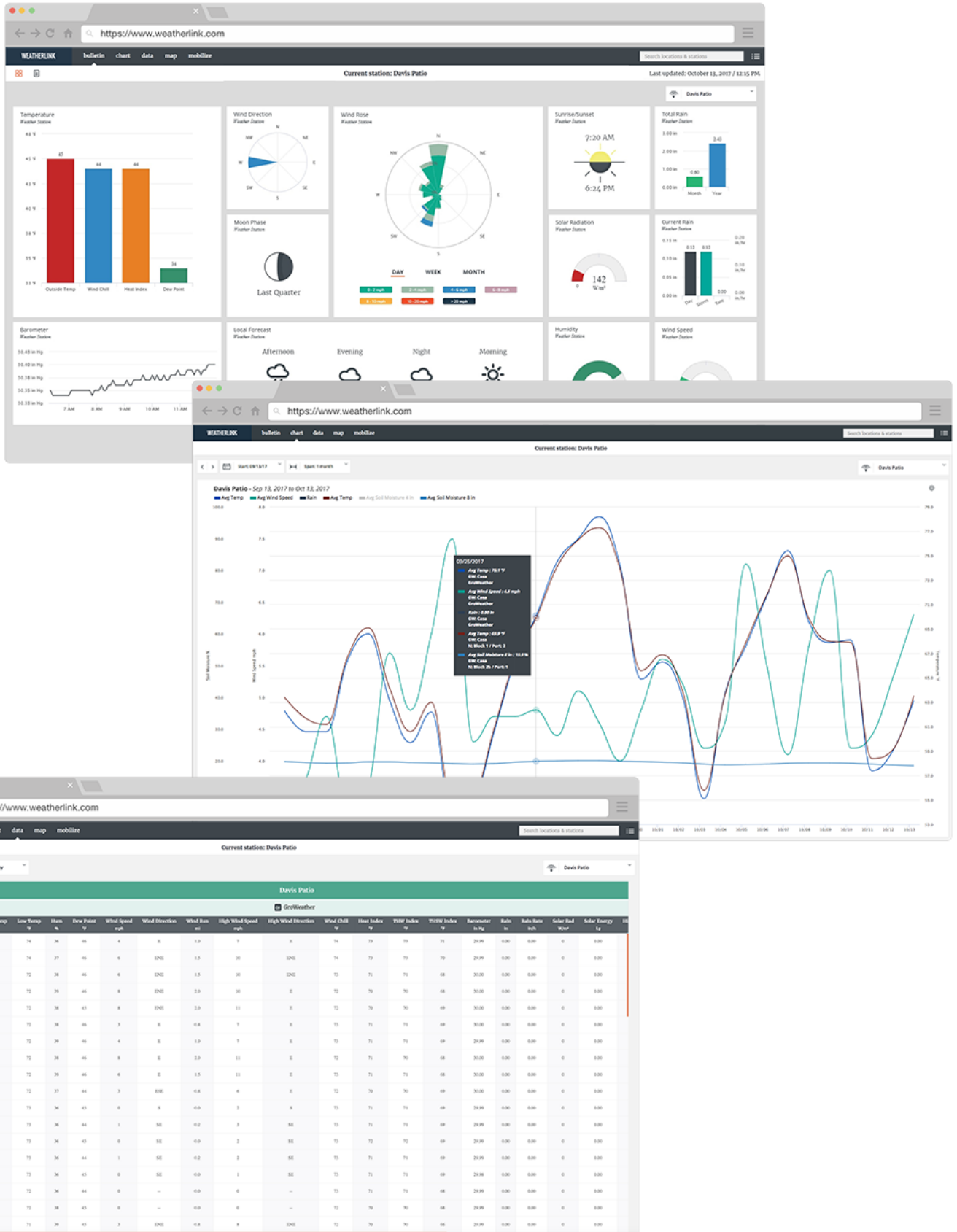
- [Vantage Vue Sensor Suites](#)
- [Additional Vantage Pro2 Sensor Suites](#)
- [Wireless Temperature and Humidity Stations](#)
- [Wireless Temperature Stations](#)

- [Wireless Leaf & Soil Moisture/Temperature Stations](#) (connect up to 10 [sensors](#) to each)
- [Sensor Transmitters](#) (connect up five [sensors](#) to each)

Access Your Real-time Data Anywhere & Anytime

Your personal WeatherLink.com page gives you current condition readings for – Temperature, Humidity, Barometer, Wind Speed, Current Rain, Wind Direction, Total Rain, Rain Rate, Solar Radiation, Wind Rose, Local Forecast, Sunrise/Sunset, Moon Phase.

With **WeatherLink Pro**, you can also store, read and graph your historical data.



Bulletin with Current Conditions

Build and customise your bulletin dashboard to receive current data updates from all of your installed sensors. You can move and resize tiles to see the data just the way you like it.

Chart (requires Pro or Pro+ subscription)

Visualise any of your sensor data with custom line and bar charts on up to 4 different y-axes. Zoom into an hour of

data or out to a full year to view details and trends.

Data (requires Pro or Pro+ subscription)

Access all of your raw sensor data at the click of a button. You can sort by date/time or data type and export any data set directly to an Excel-friendly .csv file.

Map

Use the WeatherLink Map to view and interact with the community of public stations in the worldwide WeatherLink Network. Click on a station to see a summary of current data and click the bulletin to see the station's customised weather dashboard.

Mobilize (requires Pro or Pro+ subscription)

Use the Davis Mobilize App on iOS or Android to create custom frost, weather, crop and irrigation views for web and mobile. It's powerful enough to help avoid losing your farm crop to frost, and fun for the data-savvy backyard gardener looking to perfect their tomato crop.

IPM (requires Pro+ subscription)

Access Integrated Pest Management (IPM) on Mobilize to link your weather and sensor data to actual pest risk, giving you a powerful new tool in protecting your crops from pest damage.

Additional Information

Brand	Davis Instruments
Contents	Includes WeatherLink Console, integrated sensor suite and mounting hardware. The integrated sensor suite includes a 12m anemometer cable .
Ideal For	Professional, Education, Amateur, Interested, Gardeners, Agronomy
Measurements	Air Quality, Barometric Pressure, Dew Point, Humidity, Leaf Wetness, Rainfall, Soil Moisture, Soil Temperature, Temperature, Water Temperature, Wind Direction, Wind Speed
Typical applications	Environmental (Outdoor), Field Research, Weather Monitoring
Power	Sensor suite is solar-powered with battery backup. WeatherLink Console is AC-powered with battery backup. UK 230V adapter included (EU 230V supplied to EU orders)

Outdoor Unit	<p>All Vantage Pro2 stations include a versatile Integrated Sensor Suite (ISS) that can be customised by adding further sensors.</p> <p>The integrated sensor suite includes rain collector, temperature and humidity sensors, and anemometer, 12 m anemometer cable, and solar panel. Electronic components are housed in a weather-resistant shelter. The Integrated Sensor Suite includes the tipping spoon rain collector and the radiation shield for the temperature / humidity sensor. The radiation shield has a 24 hour solar powered fan for even greater accuracy. The tipping spoon mechanism records rain every 0.2mm and is chrome plated to reduce loss through evaporation.</p> <p>The anemometer can be mounted separately up to 40ft (12m) from the rain collector. If you would like to mount it even further away, a separate transmitter is available as an accessory.</p> <p>The 6253 includes two components: the Sensor Suite which houses and manages the external sensor array, and the WeatherLink Console which provides the user interface, data display, calculations, and optional upload to WeatherLink.com. The Sensor Suite and WeatherLink console communicate via an FCC-certified, license-free, spread-spectrum frequency-hopping (FHSS) transmitter and receiver. User-selectable transmitter ID codes allow up to eight stations to coexist in the same geographic area. The WeatherLink Console can receive data from up to 8 different transmitters, including Sensor Suites. The frequency hopping spread spectrum technology provides greater communication strength over longer distances and areas of weaker reception.</p>
Sensors	<ul style="list-style-type: none"> • Wind Speed displayed in the range 2 to 150mph displayed in mph, knots, m/s or kph • Wind Direction displayed in 16 points of the Compass Rose or 0° to 360° • Temperature in the range -40°C to +65°C displayed in °C or °F • Relative Humidity in the range 0% to 100% • Rainfall in mm or inches and rate in mm or inches per hour • Calculated values for windchill, dew point, and heat index <p>Additional sensors and stations are available for UV, solar radiation, air quality, temperature, humidity, water temperature, soil moisture, soil temperature and leaf wetness.</p>
Dimensions	350 x 220 x 360 mm
Batteries	1 x CR123 lithium back-up battery required for Integrated Sensor Suite (included). Ordinarily this should last 2-3 years.
Power	Solar powered

Installation

Installation is very simple and can be carried out by almost anyone with a few basic tools. The only thing you should remember is to take care if you have to work at height.

The outdoor sensor suite and anemometer are supplied with U clamps for a 45mm Ø pole and coach screws for a post or wall. Larger U clamps can be used up to 65mm Ø

Davis weather stations require very little maintenance and do not require regular recalibration.

Additional Options

Optional WeatherLink Cloud Pro Subscription (1 Year)

WeatherLink Pro

Additional Accessories (Hold down Ctrl & left click to select multiple options)

AirLink Wi-Fi Air Quality Sensor (Indoor/Outdoor) (7210UK)

Solar Radiation Sensor (6450)

Ultraviolet (UV) Sensor (6490)

Sensor Mounting Shelf for Additional Solar and UV Sensors (6673)

Wireless Solar-Powered Sensor Transmitter (6332OV)

Daytime Fan Aspirated Radiation Shield Kit (7747)

Wireless Temperature Station (6372OV)

Wireless Solar-Powered Repeater (extends range of sensors by up to 300m) (7627OV)

Complete Wireless Soil Moisture/Temperature Station - incl. 4 soil moisture sensors & 4 temp sensors (6345CSOV)

Mounting Options

Universal Crank-shaped Mounting Pole Kit (WS-7715-CRANK)

Davis Mounting Pole Kit (7717)

Davis Mount Tripod (7716)