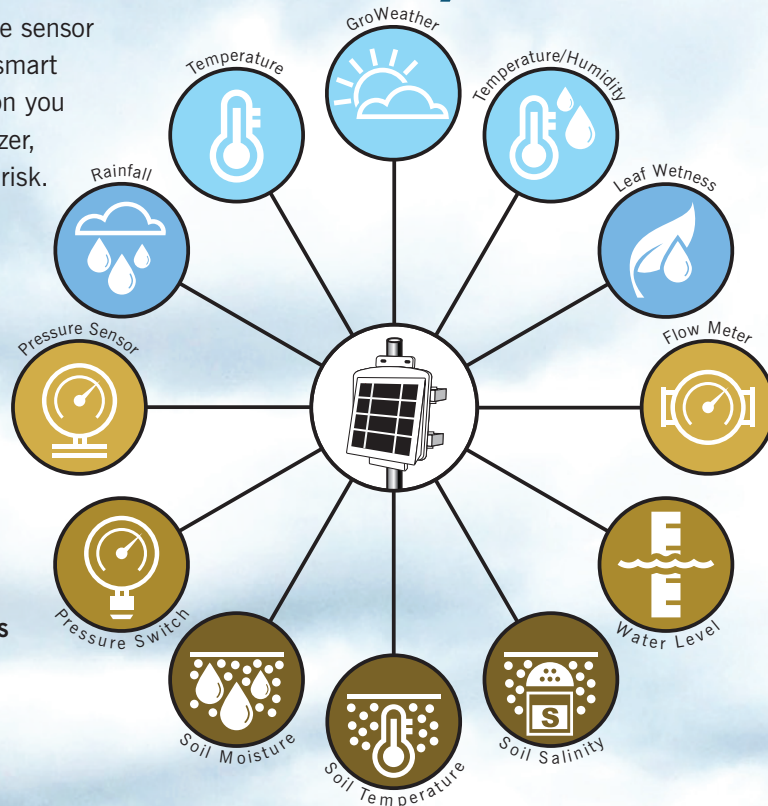


Measure, Monitor, and

The EnviroMonitor is a simple and cost effective way to get the sensor data you want seamlessly transmitted from your fields to the smart device in your hand. Get the timely and meaningful information you need to keep crops healthy while efficiently using water, fertilizer, fungicides and pesticides. This saves you money and reduces risk.

Sensors

Multiple sensors can be installed on each Node in the EnviroMonitor system. Adding new sensors as needed is a breeze. While Davis offers many sensor options, EnviroMonitor allows you to connect several top-tier, third-party sensors as well. (See page 23 for details.)



Our ever-growing list of supported sensor types includes:

- GroWeather® Sensor Suite
- Soil Moisture
- Soil Temperature
- Soil Salinity
- Temperature
- Temperature/Humidity
- Rainfall
- Leaf Wetness
- Pressure Switches
- Pressure Sensors
- Flow Meters
- Water Level

EnviroMonitor Nodes

Nodes connect over a self-optimizing mesh network and transmit critical sensor data to the EnviroMonitor Gateway. Every Node is a self-contained, weather-resistant, solar-powered unit that comes with mounting hardware. Each EnviroMonitor network can host 20 or more nodes.

Nodes communicate with each other, to allow complete network flexibility around barriers and across distances.

6810 EnviroMonitor Node

Node Features

- Connect up to 4 sensors to each Node
- Communication range: Up to 4,000 ft. (1200 m), Node to Node
- Note: Range varies due to terrain and environment
- 3-watt solar panel
- Configure using a smartphone
- Rechargeable lithium-ion battery powers the unit at night (included)
- 4 D-cell batteries provide backup (not included)



EnviroMonitor Node

Manage In-field Data



EnviroMonitor Gateway

EnviroMonitor Gateway

The EnviroMonitor Gateway collects all essential data from the Nodes and pushes it securely to the Cloud server using cellular connectivity. From there, the data can be accessed on your smart devices and computers. The solar-powered, cellular Gateway includes a rechargeable 6-volt backup battery encased in a weather-resistant housing and it comes with mounting hardware. Requires an annual service plan and one-time activation fee. (See Annual Service Plans on page 22 for details.)

6801 EnviroMonitor Gateway

Partner the Gateway with an optional cabled sensor suite to get all the benefits of a complete weather station. These rugged sensor suites are available with solar and/or UV sensors and a variety of radiation shield options. (See sensor suite options on page 12.)



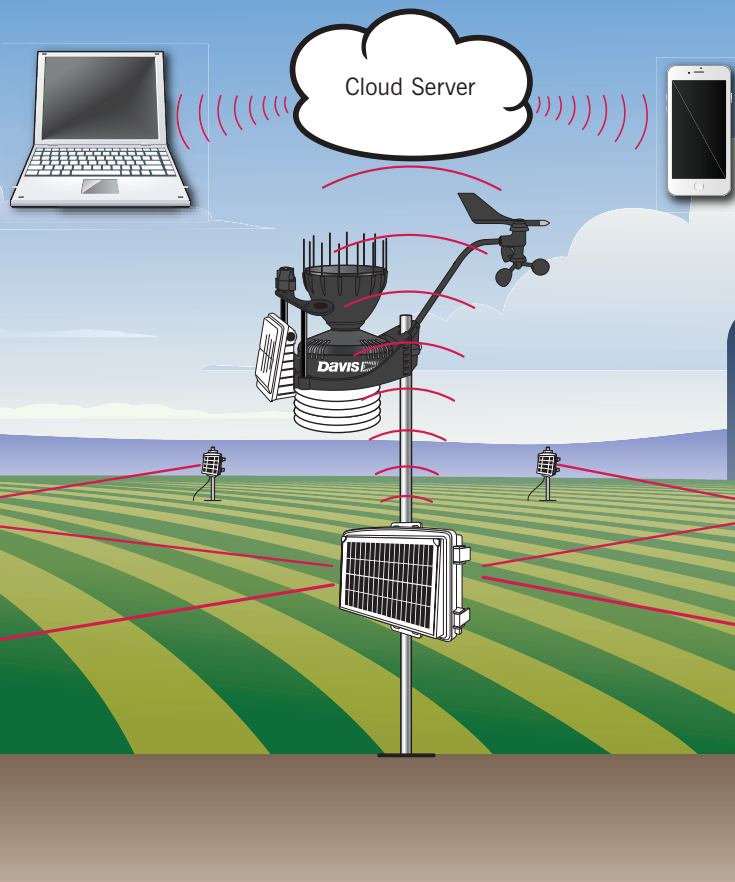
GroWeather Sensor Suite

Sensor Suites provide:

- Temperature
- Humidity
- Dew Point
- Rainfall
- Wind Chill & Heat Index
- Rain Rate
- Wind Direction
- Wind Speed
- Evapotranspiration
- Solar Radiation

Note: Barometric pressure is measured via the Gateway

EnviroMonitor communicates through a secure, self-optimizing, mesh network



EnviroMonitor: The easy-to-use, affordable, in-field monitoring system



Use real-time data to make well-informed decisions on key issues including:

-  Irrigation Management
-  Frost Conditions
-  Crop Management
-  Soil Conditions
-  Weather Events

Information for what matters most



Smart Irrigation

Determine irrigation requirements based on:

- Soil moisture data
- Evapotranspiration (ET)
- Customized alerts
- Irrigation audits



Frost Protection

Predict frost using:

- Frost forecasting
- Real-time alerts
- Sensors in critical areas



Crop Management

Track crop development by:

- Monitoring plant growth stages through Growing Degree Days
- Leveraging 7-day forecasts
- Tracking chilling requirements



Effortless configuration

The EnviroMonitor app provides easy installation, monitoring and interaction with your EnviroMonitor hardware and sensor systems. Bluetooth® in your smartphone communicates directly with the Gateway and the Node.

Once your system is set up, you can provide access to anyone on your team, while still maintaining managerial control. You will be notified of any system issues so they can be addressed promptly to avoid losing important environmental data.



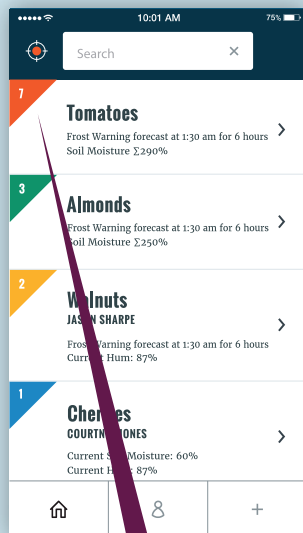
Mobilize: Critical in-field data delivered in-hand

Mobilize is an intuitive, user-friendly, decision-making app with some of the latest advancements in agronomy incorporated in its architecture. You can easily customize screen views. Quickly browse sensor data to track specific conditions based on changes in parameters related to weather, irrigation, growth cycle and more. Mobilize generates a seven-day forecast for growing degree-days and frost likelihood.

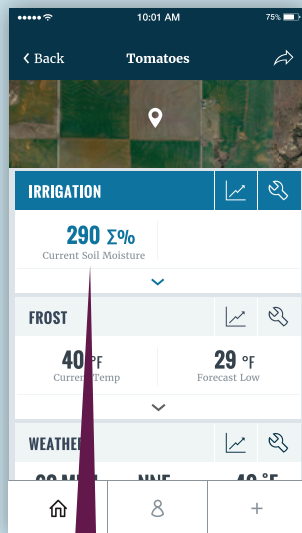
Powerful alarms and alerts
Create custom alerts based on your sensors and have them sent to people you designate.

Common alerts include:

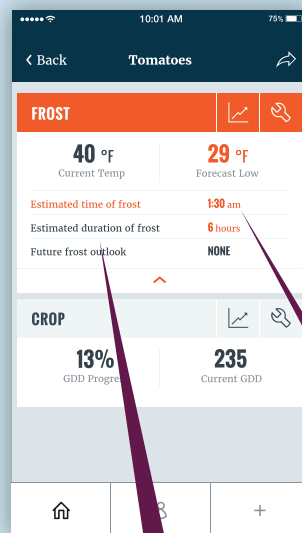
- Frost or freezing conditions
- Soil moisture levels
- Extreme heat
- Rainfall amount
- Wind speed



Notifications are ranked by severity so you know what needs your attention



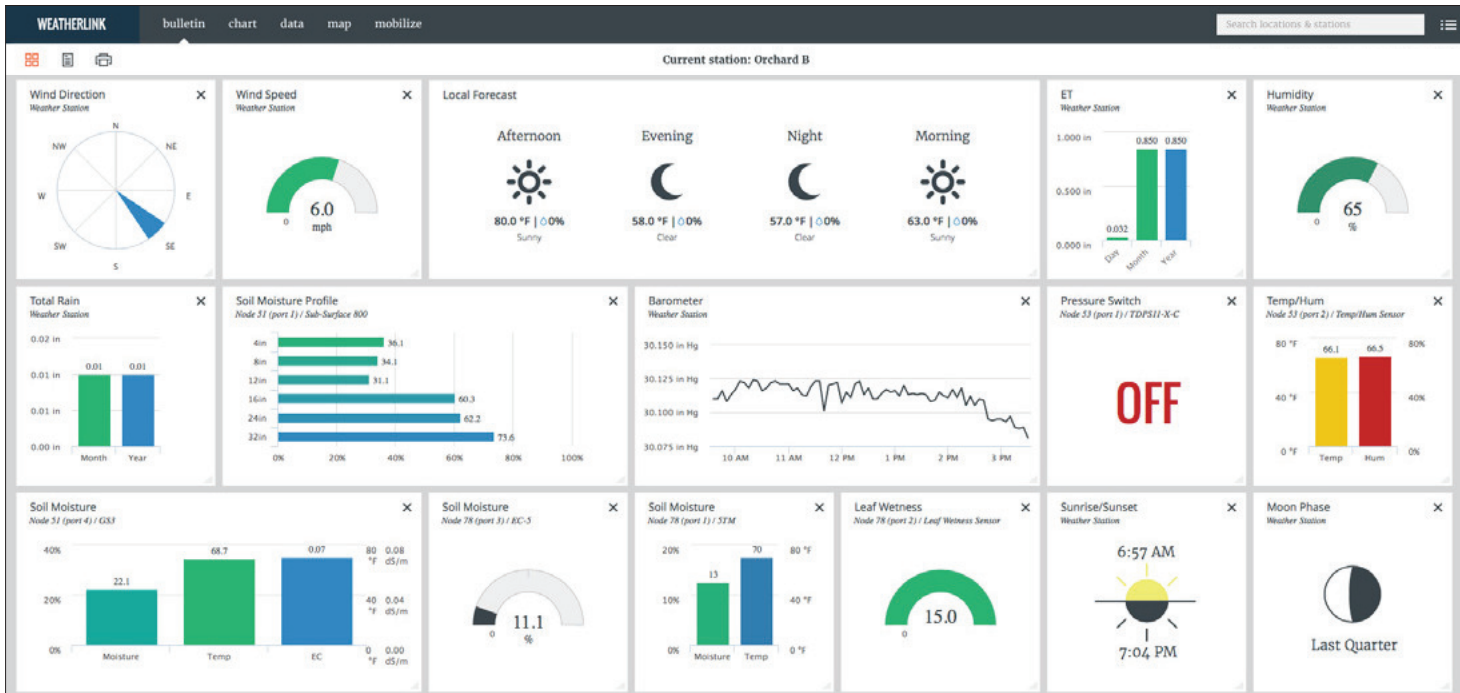
Know the soil moisture level and know when, where and amount to irrigate



Get the critical data you need to make informed decisions

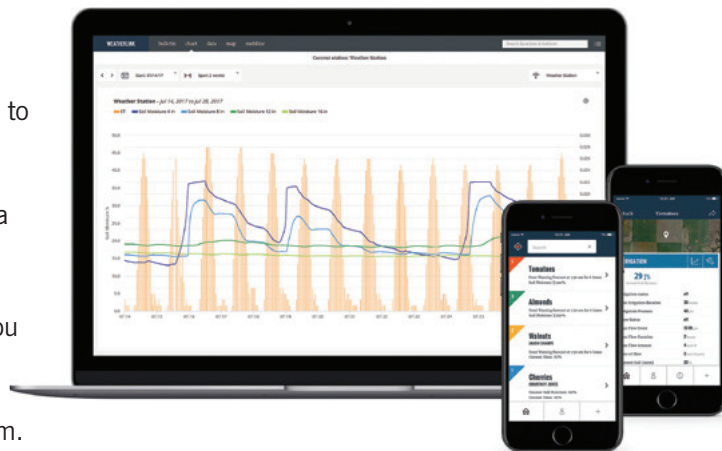
Precise forecasting allows you to stay ahead of critical conditions

Manage your site anywhere anytime.



EnviroMonitor provides key data in an easy-to-use format that works across all of your devices. The data is accessible through our FREE Mobilize app (available for iPhone® and Android™ devices) and via WeatherLink.com, a secure site dedicated to displaying current conditions and status of sensors. You can customize the dashboard to your personal preferences. Display the information that's important to you and hide what's not. WeatherLink.com also stores historical data. You can perform in-depth analyses by using our powerful data visualization tools to generate charts and graphs based on daily, weekly and annual time frames. You can also export the data.

Integrated Pest Management Modules (IPM) are tools that help you protect your crops from pest damage (sold separately). To learn more about our IPM modules (Grapes, Apples & Pears, Stone Fruits, Nut Trees), see pages 16-17 or visit www.davisnet.com/ipm.



Annual Service Plans

Each Gateway and each Node requires an Annual Service Plan. Annual subscriber fees depend on the frequency of your update interval. Choose one of three update intervals. A Gateway requires a one-time activation fee (#6645).

CHOOSE YOUR PLAN	Update Interval	Annual Service Charge/ Product Number Per Gateway		Annual Service Charge/ Product Number Per Node	
		Call	Product Number	Call	Product Number
	5 minutes	Call	6892	Call	6882
	15 minutes	Call	6894	Call	6884
	60 minutes	Call	6896	Call	6886

System requirements: Internet connection and a major browser. iPhone® and Android™ compatible. Running WeatherLink software requires: Windows 7 and above. Not compatible with Mac. Contact us directly for annual service plan information and availability for customers outside the US.

Watch a Demo Video



Scan the QR code with your smart device

Which Davis sensors can you use with EnviroMonitor?

Function	Model/Part Number	USA Units			Metric Units			Except for rainfall, all variables are measured in US units of measure and rounded to the nearest metric unit shown in the Resolution column.
		RESOLUTION	RANGE	ACCURACY ±	RESOLUTION**	RANGE	ACCURACY ±	
ENVIRONMENTAL MONITORING	✓ Outside Temperature	GroWeather® Sensor Suite 6820C*	0.1°F	-40° to +150°F	0.5°F	0,1°C	-40° to +65°C	0,3°C
	✓ Outside Humidity		1%	1% to 100%	2%	1%	1% to 100%	2%
	✓ Rainfall		0.01"	0 to 199.99"	4%	0,2 mm	0 to 6553 mm	4%
	✓ Wind Direction		1°	0° to 360°	3°	1°	0° to 360°	3°
	✓ Wind Speed		1 mph 1 knot	1 to 200 mph 1 to 174 knots	5%	0,1 m/s 1 km/hr	1 to 80 m/s 1 to 320 km/hr	5%
	✓ Solar Radiation		1 W/m2	0 to 1800 W/m2	5%	1 W/m2	0 to 1800 W/m2	5%
	Barometric Pressure (Elevation range: -999' to +15,000'; -600 to +4570 m)	Integrated in EnviroMonitor Gateway 6801	0.01" Hg	16" to 32.5" Hg	0.03" Hg	0,1 mm Hg 0,1 mb	410 to 820 mm Hg 540 to 1100 mb or hPa	0,8 mm Hg 1,0 mb or hPa
Solar Radiation	6450	1 W/m2	0 to 1800 W/m2	5%	1 W/m2	0 to 1800 W/m2	5%	
TEMPERATURE/HUMIDITY	Temperature/Humidity with Radiation Shield	6830, 6832	T: 0.1°F H: 1%	-40° to +150°F	0.5°F 2%	0,1°C 1%	-40° to +65°C	0,3°C 2%
	Stainless Steel Temperature Probe	6470	0.1°F	-40° to +150°F	1°F	0.1°C	-40° to +65°C	1°C
	Temperature Probe	6477	0.1°F	-40° to +150°F	1°F	0.1°C	-40° to +65°C	1°C
MOISTURE	Soil Moisture	6440	0.1 cb	0 to 200 cb		0.1 cb	0 to 200 cb	
	Leaf Wetness	6420	1	0 to 15	0.5	1	0 to 15	0.5
	Rain Collector	6465	0.01"	0 to 199.99"	4%	0,2 mm	0 to 6553 mm	4%
WIND	Wind Direction	Anemometer 6410	1°	0° to 360°	3°	1°	0° to 360°	3°
	Wind Speed		1 mph 1 knot	1 to 200 mph 1 to 174 knots	5%	0,1 m/s 1 km/hr	1 to 80 m/s 1 to 320 km/hr	5%

* See additional sensor suites compatible with EnviroMonitor on page 8.

For complete specifications, visit our website at www.davisnet.com.

**Resolution refers to the number of digits or decimal places displayed on EnviroMonitor Mobilize and WeatherLink.com. All weather variables (except rainfall) are measured and accumulated in US units of measure, which are then converted to metric units for display purposes. Our rain collector measures in true 0.01" or 0,2 mm increments.

Which third-party sensors can you use with EnviroMonitor?



Pressure Sensor



Pressure Switch



Soil Moisture



Soil Temperature



Soil Salinity



Water Level



Flow Meter

See the entire list of supported sensors: www.davisnet.com/em-sensors

EnviroMonitor is an open sensor platform that is compatible with hundreds of industry leading third-party sensors from the manufacturers you know and trust. EnviroMonitor is compatible with SDI-12, analog voltage (i.e. 0-3V; 0-5V; 0-12V), contact closure, pulse, and I²C. We are consistently integrating new sensors to expand the capabilities of the EnviroMonitor platform and software. For the latest list of supported sensors, please visit our website at www.davisnet.com/em-sensors.

Note: Please contact us directly if a desired sensor is not on the list.

